

Aria

COLLECTION



MEDITERRANEAN STYLE

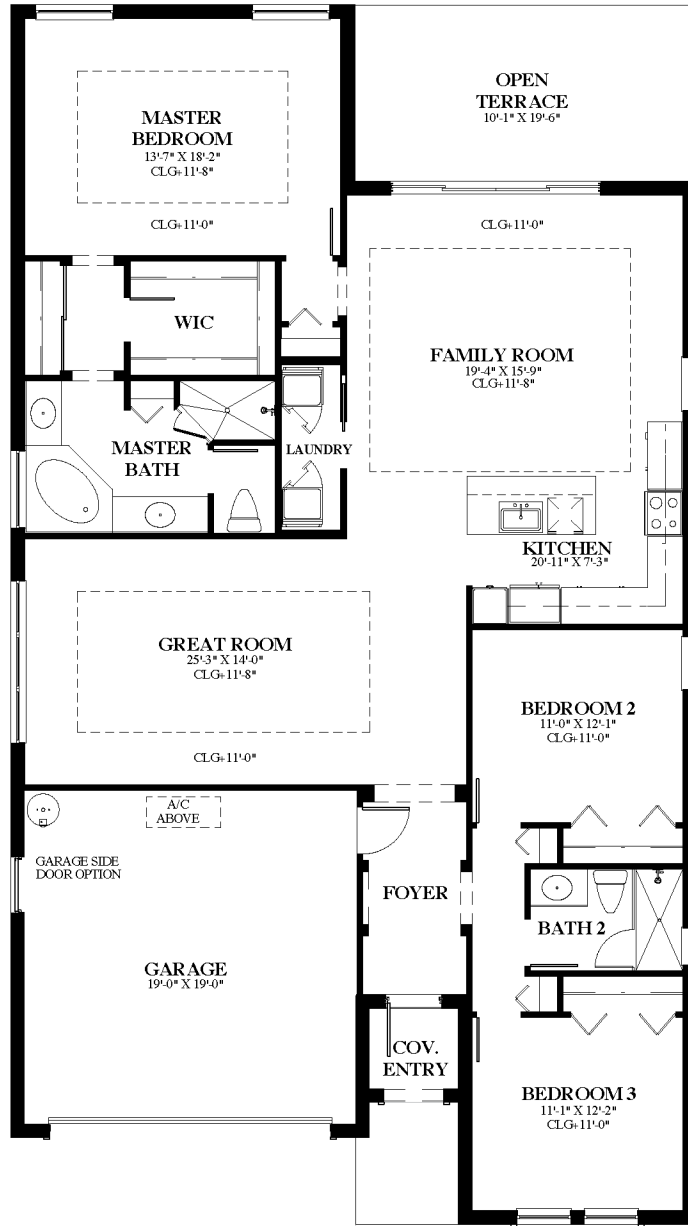
One Story

3 bedrooms, 2 baths, Great Room,
Family Room, Kitchen Island,
Breakfast Nook, 2 Car Garage



PLAN NO.

Aria 10



First Floor	1,954 SF
Covered Entry	28 SF
Garage	393 SF
GRAND TOTAL	2,375 SF



15100 SW 176 STREET MIAMI, FL 33187 / 305 235 1100 / INFO@MOSAICVENETIANPARC.COM

ORAL REPRESENTATIONS CANNOT BE RELIED UPON AS CORRECTLY STATING THE REPRESENTATIONS OF THE DEVELOPER. FOR CORRECT REPRESENTATIONS, REFERENCE SHOULD BE MADE TO THIS CONTRACT AND THE DOCUMENTS REQUIRED BY SECTION 718.503, FLORIDA STATUTES, TO BE FURNISHED BY A DEVELOPER TO A BUYER OR LESSEE. RENDERINGS ARE ARTIST'S RENDERINGS AND MAY CONTAIN OPTIONS, WHICH ARE NOT STANDARD ON ALL MODELS. DEVELOPER RESERVES THE RIGHT TO CHANGE OR WITHDRAW ANY OFFER AT ANY TIME. NOT AN OFFER WHERE PROHIBITED BY STATE STATUTES. IN OUR CONTINUING EFFORT TO IMPROVE OUR PRODUCT, LUXCOM RESERVES THE RIGHT TO REVISE PLANS, SPECIFICATIONS, DIMENSIONS, MATERIALS, AND ELEVATIONS WITHOUT NOTICE TO, OR APPROVAL BY THE BUYER. THESE CONCEPTUAL DRAWINGS AND FEATURES ARE FOR THE CONVENIENCE OF REFERENCE, THEY SHOULD NOT BE RELIED UPON AS REPRESENTATION, EXPRESSED OR IMPLIED, OF THE FINAL DETAIL. LANDSCAPING DEPICTED NOT TO SCALE AND MAY VARY AS TO VEGETATION, MATURITY AND NUMBER. MEASUREMENTS ARE FROM BLOCK/STUD AT ITS FARTHEST POINT. THIS DEVELOPMENT IS LOCATED IN A COMMUNITY DEVELOPMENT DISTRICT. A SPECIAL ASSESSMENT WILL BE ASSESSED ON THE TAX ROLL AGAINST ALL PROPERTY OWNERS WITHIN THIS DISTRICT. PLEASE ASK A MOSAIC NEW HOME CONSULTANT FOR FURTHER INFORMATION.

